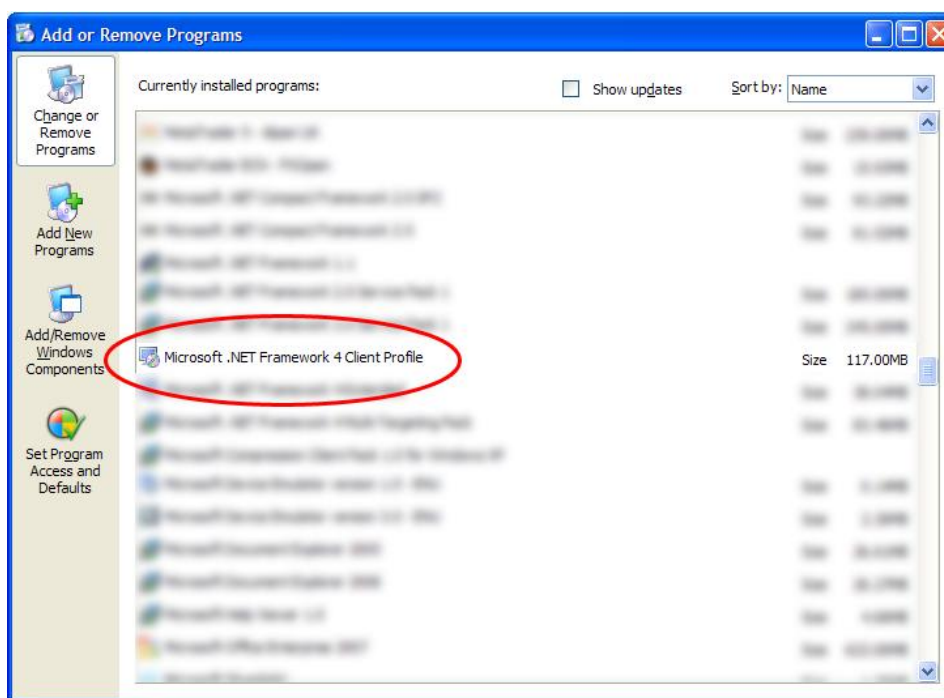




USER GUIDE

Requirements

- Windows OS
- Metatrader 4
- Internet connection
- [.NET Framework 4 Client Profile](#) installed on your machine. You can check if your machine has this framework installed by going to Control Panel -> Add or Remove programs (for Win XP). The framework should be displayed as shown in the screenshot below. You can download .NET Framework 4 Client Profile from [here](#).



Installation

1. Place [FXNewsAlert_EA.ex4](#) into the [experts] folder of your MT4 terminal
2. Place [FXNewsAlert.dll](#) into the [experts\libraries] folder of your MT4 terminal
3. Open MT4 & place [FXNewsAlert_EA.ex4](#) onto any chart * (preferably [EURUSD](#), as it's the most liquid pair) * *
4. The following section explains the EA indicator operation
5. Open [FXNewsAlertSetup.msi](#) and follow the installation instructions
6. Each time you want to use the app, make sure you **start MT4 first** to put the price streams into memory, then open the app

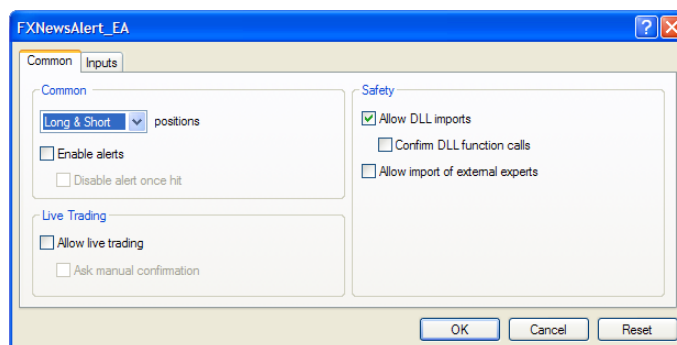
* You only need to place the EA indicator on **one chart**

* * *EURUSD has the most tick volume, so the app is more likely to get current bid prices without lags. The EA indy writes bid price every tick and refreshes candle data every minute; the app checks for new candle data every 5 seconds and refreshes the RSS and News widget every minute*

Expert Advisor (EA) Indicator Configuration

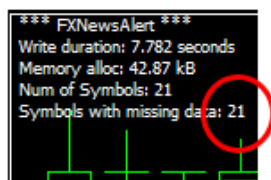
[FXNewsAlert_EA.ex4](#) requests data for all timeframes on all open charts, so it's recommended to use a blank [EURUSD](#) chart to act as a price server for the app, separate from any other charts. This way, you won't be changing timeframes which will interrupt the price stream fed to the app.

When you attach the EA indy to a chart, you only need to tick the *Allow DLL imports* box; there is no code that creates signals **nor tampers with your account in any way** – it's just a data dump of candle data and related information.

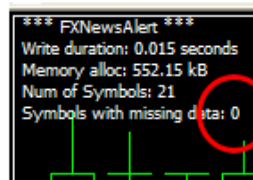


The indy sleeps for 30secs after its loaded, to allow chart data to be buffered. Once it awakens, it fetches data for all timeframes on each chart open in your terminal. When data is requested from your broker's server the first time, the data doesn't yet exist in memory, so you should see missing symbols (left picture). This can also take quite a long time (in computing terms) as each request is queued. Upon a new one-minute candle, the data is requested again, which should now be in memory and you should see the data as displayed in the right picture below. The memory allocation should also increase to verify data now exists in memory ready for the app to read.

First request to
broker server



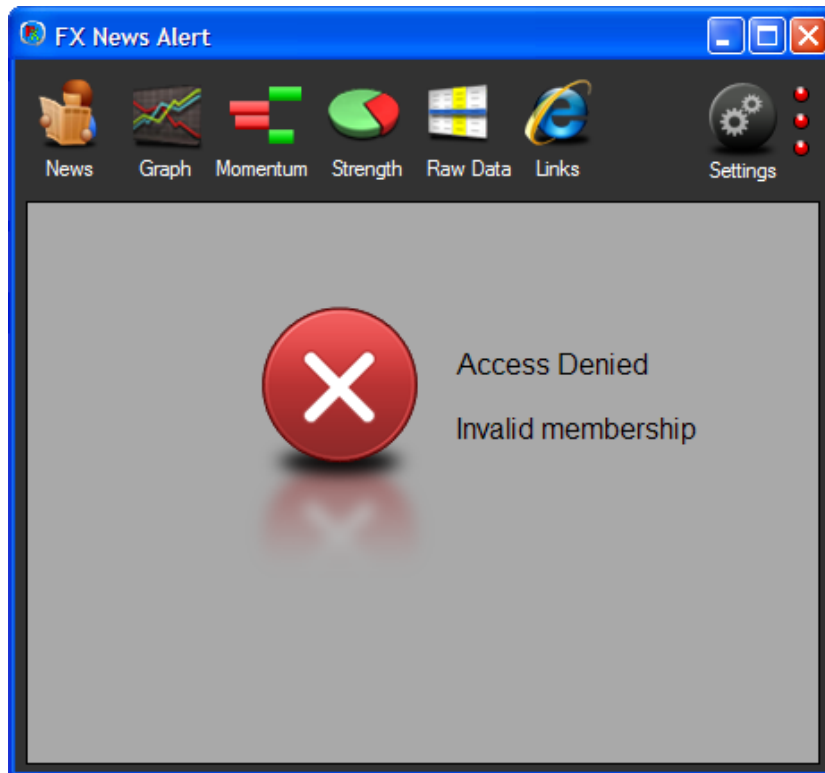
Second successful request
to broker server



In summary, the EA indy takes a few one-minute candles to get data, so please be patient. If you still get missing data, open the indicator input properties and change the *ShowMissingData* box to *True*; you can then view the symbols and timeframes with missing data by clicking *Terminal* -> *Experts* tab. Go to the chart and right-click *Refresh* and drag your mouse on the chart to pull candle data from the server.

Application Configuration

When the app loads, you're presented with a log-in screen, enter your details. If you skip this screen, you'll see the following default screen:



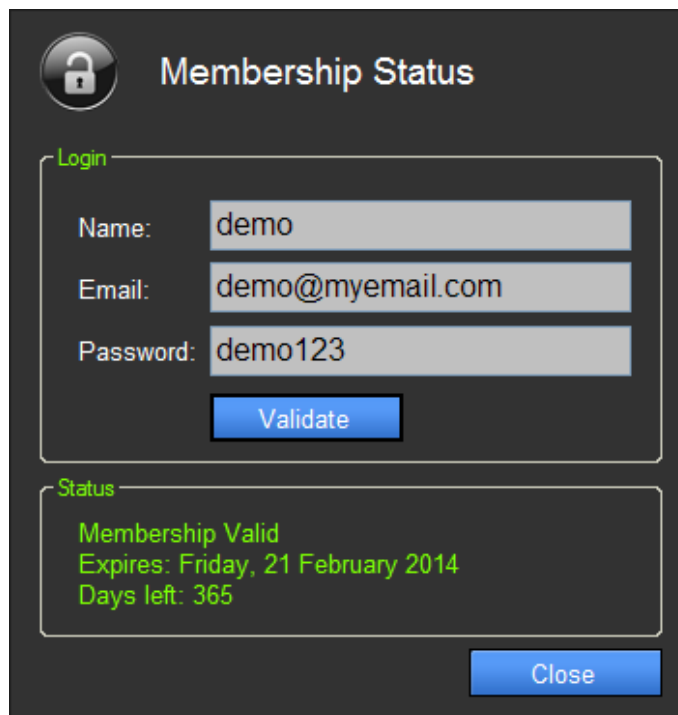
Notice the three red LED's on the right next to the settings button, these need to be green to unlock the app. You can hover over the LED's to see their definitions.

LED 1: Membership status

Let's start with the first LED 'Membership status'; click the Settings button and click the log-in box. Enter your details that were emailed to you and click validate.

A screenshot of a "Membership Status" dialog box. The dialog has a dark grey background. At the top left is a lock icon. The title "Membership Status" is at the top right. Below the title is a "Login" section with three input fields labeled "Name:", "Email:", and "Password:". A blue "Validate" button is at the bottom right of the "Login" section. Below the "Login" section is a "Status" section with a large empty text area. A blue "Close" button is at the bottom right of the "Status" section.

If validation is successful, you'll see the status of the membership and when you click close, the app now has its first green LED lit:



Membership Status

Login

Name: demo

Email: demo@myemail.com

Password: demo123

Validate

Status

Membership Valid

Expires: Friday, 21 February 2014

Days left: 365

Close

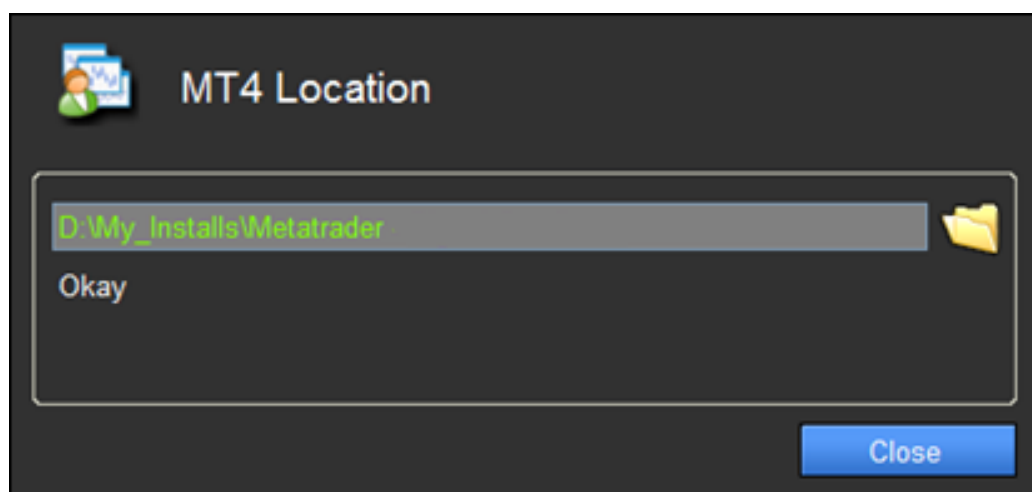
Validated



LED 2: MT4 Location

Next LED we need to turn green is the 'MT4 Location'. This grabs the data from your Metatrader terminal to stream prices for analysis within the app. To activate this LED, click Settings again and click the MT4 Location box. (Note: The 'MT4 Location' LED needs to be lit to activate the 'Profiles' LED)

Click the folder icon and point to the MT4 terminal where you've placed [FXNewsAlert.ex4](#) and [FXNewsAlert.dll](#). If the terminal is valid, you'll get an Okay message; click close and the middle LED will be green.



MT4 Location

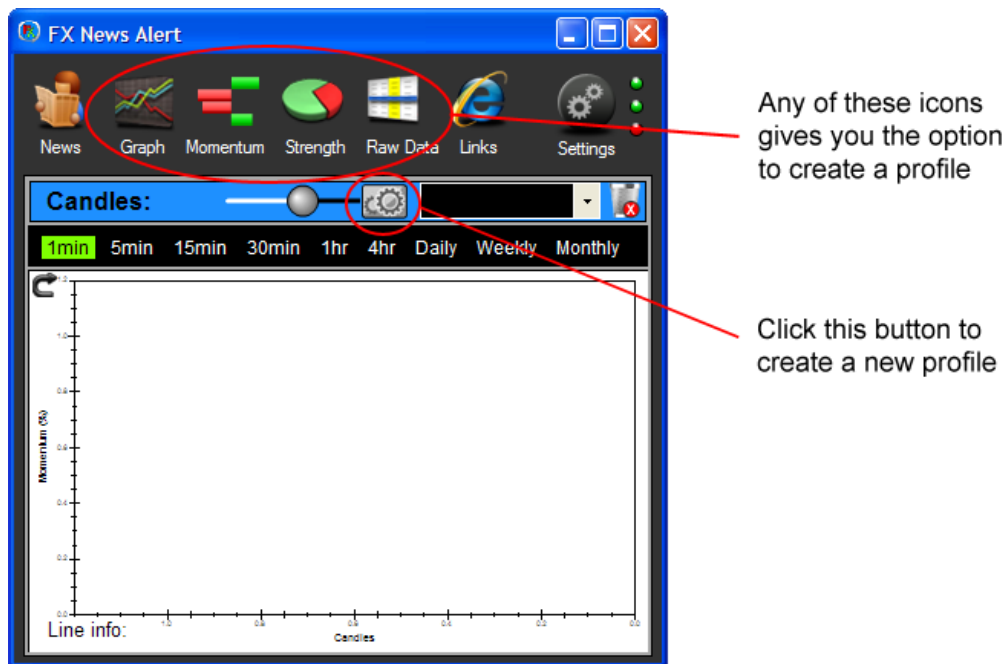
D:\My_Installs\Metatrader

Okay

Close

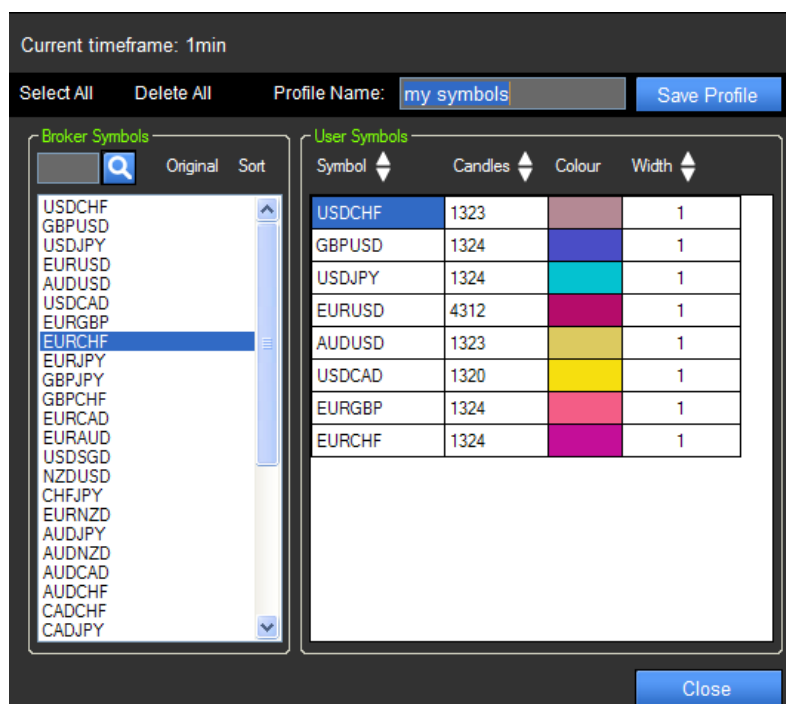
LED 3: Profiles

Now we're ready to personalise the app by creating different profiles from MT4 data. Click on any of the buttons in the top toolbar, to access the profile button.



The profile settings screen allows you to add your preferred symbols. The left column shows all the symbols available from your MT4 terminal. To choose a symbol, double-click a symbol in the left column. If you want to remove a symbol in the 'User Symbols' box, double-click the symbol name. You can change the colour and width, so you can easily identify a symbol when using the graph screen.

Enter a profile name and click 'Save Profile' to save your settings. You can configure different profiles to track different market sentiments, e.g. type in "JPY" in the search box and save this as "yen pairs", to see how the BoJ is treating the market, or do a search for dollar pairs and save as "FED up"; you can then switch between profiles whilst trading by clicking the drop-down box, to gauge market sentiment for different clusters of pairs.

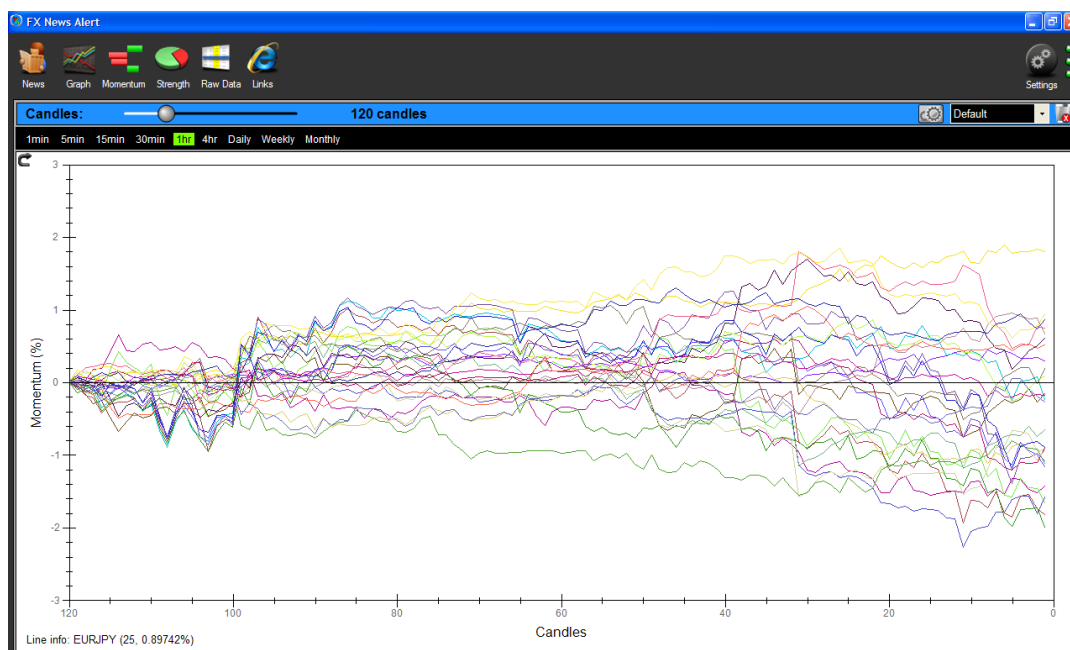


Summary

The app is now configured for use, but that's just the start of the journey. There's a plethora of ways to disseminate the data...

Graph

Try to find correlations between pairs. The graph calculates momentum difference between candles where they all share a common start point, so you can click on the daily timeframe for example, and scroll the candle bar to 52 (as of 21st feb) and you can see price momentum across all pairs in the selected profile since the year open.



Momentum

Use the momentum screen for scalping; when the 1 hour alarm starts beeping, then the market is moving and jump on the gravy train. You can also see how moves are measured against central bank rates by clicking the timeframe labels; green highlights indicate price is with rates and red means they are moving against rates.



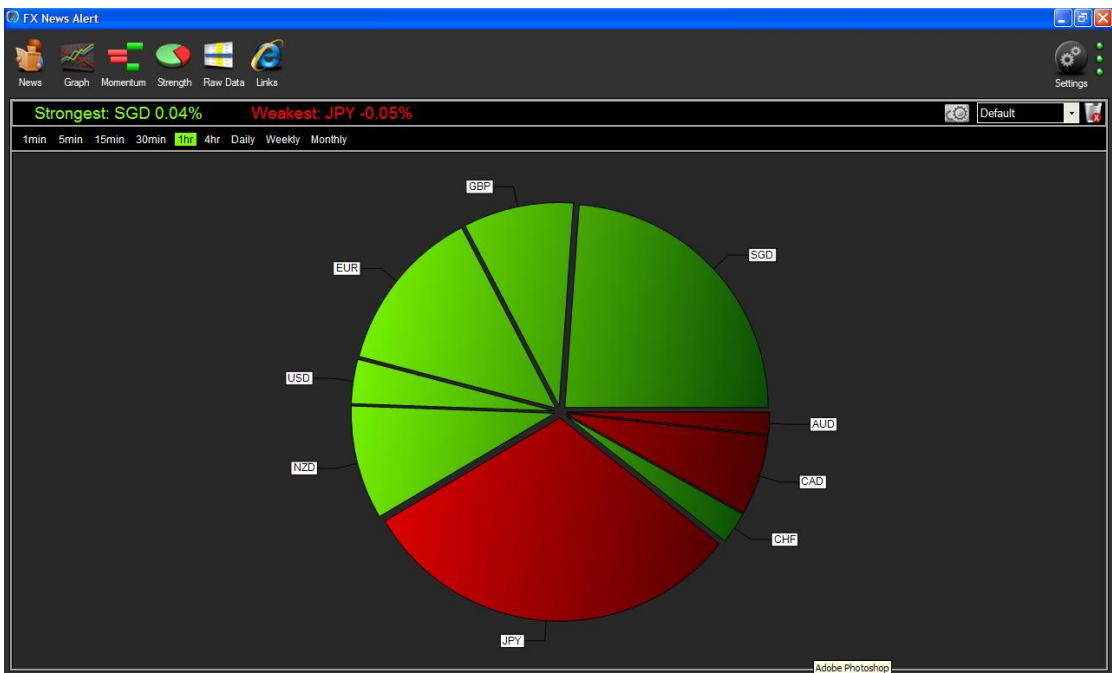
Raw Data

You can try to see the matrix by looking at the heat map and seeing the heartbeat of the market. The columns are sortable, so click the daily column to see the biggest movers of the day and how the shorter timeframes are reacting. The ADR columns show a traffic-light system; any move below 50% is green, between 50 and 100% is orange and hyper-extended pairs moving well beyond their ADR are colour-coded red. You can change the ADR range in the [FXNewsAlert.ex4](#) properties; it is set to 10 days by default.

FX News Alert																			
News Graph Momentum Strength Raw Data Links																			
Heat map																			
Symbol	Monthly %	Monthly Pips	Weekly %	Weekly Pips	Daily %	Daily Pips	4hr %	4hr Pips	1hr %	1hr Pips	30min %	30min Pips	15min %	15min Pips	5min %	5min Pips	ADR	Current ADR	ADR %
GBPCHF	-1.638	-2450	-0.616	-1167	0.433	611	-0.191	-271	0.032	45	0.032	45	0.028	39	0.028	39	1373	1692	123
GBPCAD	-1.675	-2648	-0.422	-658	0.394	610	-0.004	-6	0.013	20	0.013	20	-0.024	-38	-0.024	-38	1398	1519	109
GBPNZD	0.322	-6277	-0.413	-757	0.268	484	-0.056	-103	0.008	15	0.008	15	-0.029	-53	-0.029	-53	2211	1577	71
GBPUSD	-2.142	-3258	-1.136	-1710	0.219	325	-0.022	-33	0.025	37	0.025	37	-0.026	-38	-0.026	-38	1370	1160	85
USDCHF	2.15	1956	0.852	785	0.271	251	-0.189	-176	0.016	15	0.016	15	0.032	30	0.032	30	638	645	101
GBPUSD	-0.769	-5976	-1.663	-2580	0.162	247	-0.003	-4	0.01	16	0.01	16	-0.009	-14	-0.009	-14	1258	1402	111
USDCAD	2.182	2175	1.253	1251	0.213	217	-0.001	-1	0	0	0	0	-0.014	-14	-0.014	-14	562	382	68
AUDCHF	2.464	44	0.327	31	0.22	209	-0.172	-164	0.008	9	0.008	9	0.051	49	0.051	49	763	719	94
AUDCAD	2.489	508	0.743	770	0.172	179	0.016	17	-0.015	-16	-0.015	-16	-0.003	-3	-0.003	-3	668	451	68
AUDNZD	-1.167	-1480	0.754	918	0.068	83	-0.028	-34	-0.016	-20	-0.016	-20	0	0	0	0	824	344	42
CADCHF	0.01	9	-0.386	-353	0.057	52	-0.188	-172	0.014	13	0.014	13	0.049	45	0.049	45	730	446	61
AUDUSD	-1.652	-1722	-0.513	-529	-0.045	-46	0.018	18	-0.015	-15	-0.015	-15	0.014	14	0.014	14	761	388	51
USDSGD	0.12	145	0.155	197	-0.04	-49	-0.063	-78	-0.034	-42	-0.034	-42	-0.001	-1	-0.001	-1	460	334	73
NZDUSD	-0.433	-363	-1.21	-1022	-0.08	-67	0.052	43	-0.001	-1	-0.001	-1	0.022	18	0.022	18	841	443	53
EURCHF	-0.518	-640	-0.173	-213	-0.171	-210	0.034	42	0.026	32	0.026	32	0.006	7	0.006	7	570	537	94
EURCAD	-0.482	-652	0.218	293	-0.218	-294	0.224	301	0.009	12	0.009	12	-0.044	-59	-0.044	-59	1201	989	82
EURAUD	-0.955	-1244	-0.505	-654	-0.389	-503	0.204	262	0.02	26	0.02	26	-0.048	-62	-0.048	-62	1202	1313	109
EURGBP	1.229	1052	0.663	671	-0.582	-507	0.23	199	0.003	3	0.003	3	-0.02	-17	-0.02	-17	915	1288	141
EURNZD	-2.154	-3486	0.24	279	-0.333	-529	0.177	280	0.003	4	0.003	4	-0.049	-77	-0.049	-77	1721	1750	102
EURUSD	-2.601	-3531	-1.031	-1378	-0.432	-574	0.227	239	0.014	19	0.014	19	-0.029	-39	-0.029	-39	1073	1227	114
NZDJPY	0.882	678	-1.857	-1467	-0.765	-598	-0.17	-132	0.039	30	0.039	30	0.018	14	0.018	14	1041	882	85
USDJPY	1.331	1220	-0.567	-530	-0.676	-632	-0.221	-206	0.044	41	0.044	41	-0.001	-1	-0.001	-1	1168	1071	92
AUDJPY	-0.348	-333	-1.142	-1100	-0.723	-694	-0.202	-193	0.03	29	0.03	29	0.015	14	0.015	14	1048	1031	98
GBPJPY	2.489	-3619	-2.25	-3263	-0.513	-731	-0.224	-318	0.059	84	0.059	84	-0.01	-14	-0.01	-14	1970	1621	82
CADJPY	0.619	-753	-1.829	-1699	-0.889	-818	-0.219	-200	0.038	35	0.038	35	0.011	10	0.011	10	1186	1225	103
CHFJPY	0.789	-795	-1.429	-1449	-0.905	-914	-0.037	-37	0.019	19	0.019	19	-0.043	-43	-0.043	-43	1422	1680	118
EURJPY	-1.314	-1636	-1.633	-2040	-1.105	-1373	0.004	5	0.059	73	0.059	73	-0.033	-41	-0.033	-41	2011	2453	122

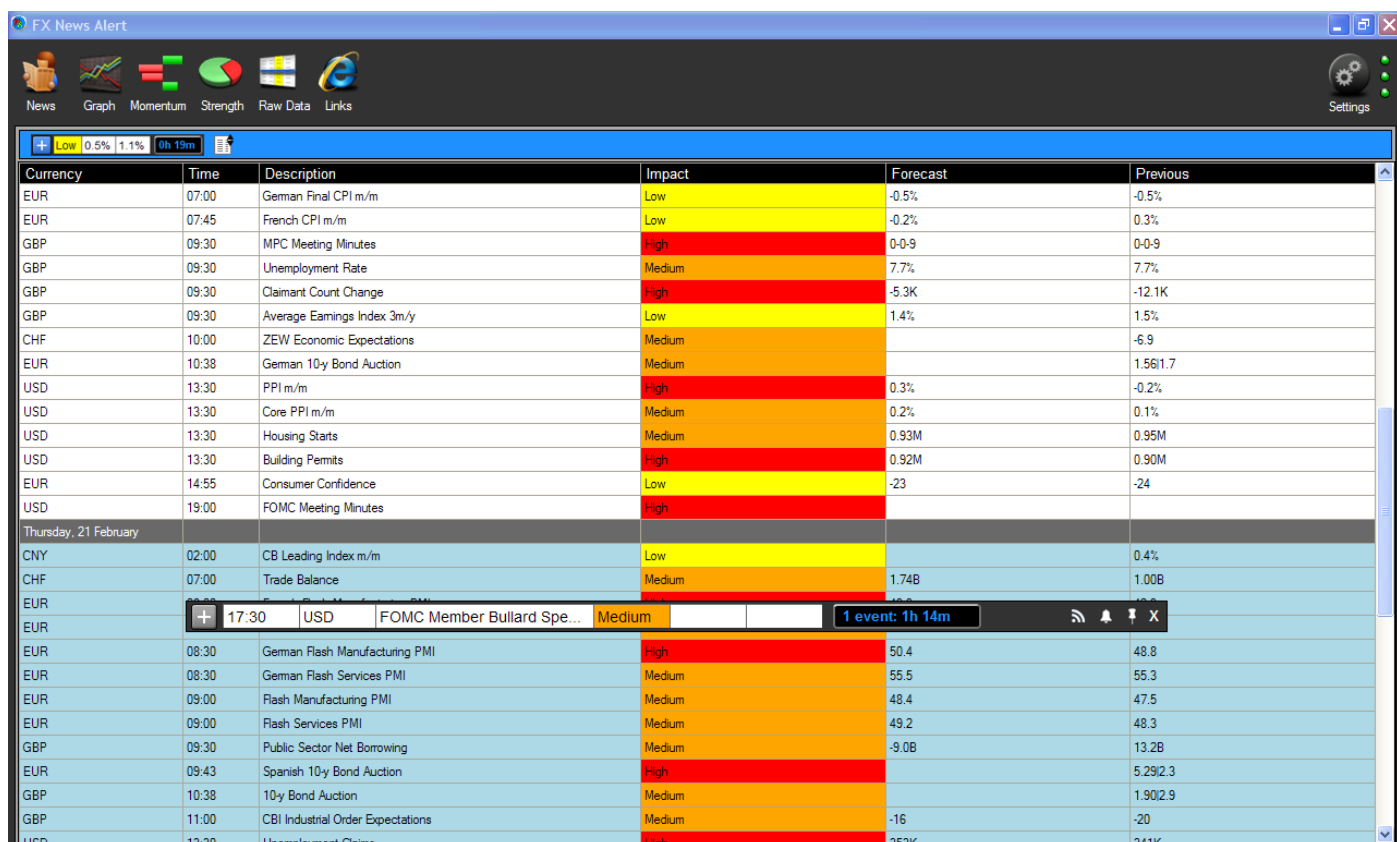
Strength

Quickly visualise currency strength with a pie-chart. This screen calculates the average momentum for each symbol and shows the highest and lowest momentum pairs.



News

Finally, the news screen shows you weekly events. Today's events are highlighted blue. There's an icon in the toolbar that also allows you to sort the calendar, so you can see all high impact events or sort currencies. Last but not least, there's a widget button which occupies minimum space so you can have it always open whilst inside your MT4 terminal. You can toggle either the news events that are due next or an RSS feed to see breaking news or forum posts from ForexFactory.



Currency	Time	Description	Impact	Forecast	Previous
EUR	07:00	German Final CPI m/m	Low	-0.5%	-0.5%
EUR	07:45	French CPI m/m	Low	-0.2%	0.3%
GBP	09:30	MPC Meeting Minutes	High	0-0.9	0-0.9
GBP	09:30	Unemployment Rate	Medium	7.7%	7.7%
GBP	09:30	Claimant Count Change	High	-5.3K	-12.1K
GBP	09:30	Average Earnings Index 3m/y	Low	1.4%	1.5%
CHF	10:00	ZEW Economic Expectations	Medium		-6.9
EUR	10:38	German 10y Bond Auction	Medium		1.561.7
USD	13:30	PPI m/m	High	0.3%	-0.2%
USD	13:30	Core PPI m/m	Medium	0.2%	0.1%
USD	13:30	Housing Starts	Medium	0.93M	0.95M
USD	13:30	Building Permits	High	0.92M	0.90M
EUR	14:55	Consumer Confidence	Low	-23	-24
USD	19:00	FOMC Meeting Minutes	High		
Thursday, 21 February					
CNY	02:00	CB Leading Index m/m	Low		0.4%
CHF	07:00	Trade Balance	Medium	1.74B	1.00B
EUR	08:30	German Flash Manufacturing PMI	High	50.4	48.8
EUR	08:30	German Flash Services PMI	Medium	55.5	55.3
EUR	09:00	Flash Manufacturing PMI	Medium	48.4	47.5
EUR	09:00	Flash Services PMI	Medium	49.2	48.3
GBP	09:30	Public Sector Net Borrowing	Medium	-9.0B	13.2B
EUR	09:43	Spanish 10-y Bond Auction	High		5.29/2.3
GBP	10:38	10-y Bond Auction	Medium		1.90/2.9
GBP	11:00	CBI Industrial Order Expectations	Medium	-16	-20
USD	12:20	Unemployment Claims	High	252K	241K

Feedback

Any feedback, questions or bug reports please send an email to:

feedback@fxnewsalert.com